

## HENRY ROWE SCHOOLCRAFT TRAIL

This map and compass trail may be divided into north and south loops. The South Loop is about 9 miles in length while the North Loop is about 5 miles. Many hiking options are available, such as individual day hikes of the two loops, combinations of the two loops and backpacking. Most groups prefer beginning with the South Loop, as this is the easiest to follow initially from the trailhead parking area.

The trail honors Henry Rowe Schoolcraft, pioneer explorer, geographer and noted authority on the American Indian. Schoolcraft was born on March 28, 1793 in Albany County, New York State. He spent his boyhood in Hamilton, New York, where his family was engaged in glassmaking. Schoolcraft studied chemistry and mineralogy at Middlebury College in Vermont. With the collapse of the American glass industry after the War of 1812, Schoolcraft decided to see the American West.

In 1817 he journeyed down the Ohio River to Cairo and up the Mississippi to Herculaneum, south of St. Louis. In Herculaneum he met Moses Austin who helped him make a thorough exploration of the Missouri lead mining district. Austin's son, Stephen, provided Schoolcraft with an apartment in the Austin home in Potosi, and the two young men became friends. The next three months of exploration provide the most complete description in print of the lead mining area as it existed in 1818.

After completing his exploration of the mining district, he declined an invitation from the Austins to join their Texas settlement project. Schoolcraft left Potosi on November 5, 1818 with a frontiersman named Levi Pettibone and a packhorse named Butcher for a walking tour of the Missouri and Arkansas Ozarks. Schoolcraft's journal gives a detailed day by day account of this winter trip through what was then a trackless wilderness. In 1818 the Ozarks were inhabited only by a few hardy settlers living in primitive cabins.

By November 11 Schoolcraft reached the Current River and on January 1, 1819 reached the James River. From there he visited the White River and the northern Arkansas country. He returned to Potosi on February 4, 1819, having survived many hardships. During the entire trip he subsisted on game and other wild foods. He states in his journal that he covered more than 900 miles during the three month trip, a remarkable accomplishment for a young city-bred man with very limited prior wilderness experience.

In 1820 Schoolcraft was appointed as geologist with the Lewis Cass military expedition to Lake Superior and the headwaters of the Mississippi. In 1822 he was appointed Indian agent at Sault Ste. Marie. In 1828 he was elected to the Michigan Territorial Legislature. In 1832 he served as leader of another expedition to the upper Mississippi and on this trip discovered the source of the Mississippi River at Lake Itasca. His report to the Secretary of War on the Lake Itasca expedition is a masterpiece of adventure writing. In 1847 Schoolcraft, who married the daughter of an Indian Chief, was commissioned by the U. S. Congress to collect and put into writing all the information then known about the American Indian. This monumental task occupied him for the rest of his life.

Schoolcraft published 31 major works. He was a founder of the Michigan Historical Society and the American Ethnological Society. He was honored by membership in many scientific societies and in 1846 was awarded an honorary doctorate by the University of Geneva. Longfellow's poem "Hiawatha" was inspired by the writing of Schoolcraft. He died in Washington, D. C. on December 10, 1864.

## **INFORMATION FOR HIKERS**

### **Trailhead**

The Schoolcraft trail is in Washington County, Missouri. The map provided in these instructions works quite well. Those hikers desiring a higher level of map detail should carry copies of the 7.5 minute topographic maps of the Palmer and Shirley quadrangles and sketch the trail route on these maps before starting the hike.

To reach the trailhead from the Highway 21 – Highway 8 intersection, go west on 8 one block to Route P. Go south on Route P 10.1 miles to FR 2397 on the left. (FR 2247, known locally as Pigeon Roost Rd., can serve as a landmark; it joins Route P on the right approx. 0.3 miles before reaching FR 2397.) Turn left on FR 2397 and go 0.2 miles to the trailhead, Pt A on the trail map. Park off the road, being careful not to block it.

### **Trail Distances**

In the instructions below, distances between points are given in paces. The pace, as used in these instructions, means TWO thirty inch steps (i.e., a pace equals 5 ft). The pace measurements given are approximate, but are believed to be accurate to within  $\pm 10\%$ .

### **Compass Bearings**

The bearings given are “as read” compass bearings. Do not correct for the magnetic deflection from true north.

### **Trail Markers**

Unless stated otherwise in the hike instructions, you will find a painted Appalachian Trail style double blaze (two 2” x 4” vertical rectangles) on a tree at each turning point on the trail. Turning points are labeled with a letter or number in the hike instructions. The double blaze will confirm that you are “on the beam.” Several turning points are marked with both a double blaze and rock cairn. But remember that double blazes can disappear when trees are cut or blown down. If you find a double blaze missing at a turning point, please mention this in your hike report, giving the point number or letter, so that the blaze can be replaced promptly. (If you can afford the time, add a few rocks to the cairns when you pass them. Some are rather small.)

### **Emergency Exit**

If you become hopelessly lost before reaching Pt 5, take a due west ( $270^\circ$  bearing) course to Route P. From Pt 5 to the end of the trail, take a due east ( $90^\circ$  bearing) course to Route P. From any point along the trail you will reach Route P with no more than two miles of walking. Follow Route P left or right to walk back to your car at Pt A.

### **Place Names**

Many of the place names on the trail are associated with Schoolcraft (see the Schoolcraft biography on page 1 of the trail instructions). Other designations honor National Forest employees and Scouters. Frank Myers was formerly Chief Ranger of the Potosi District of the Mark Twain National Forest (MTNF). Now retired, Myers laid out the well-known Berryman Trail in the Potosi District of the MTNF in 1964. Stuart N. Senniger was first Chairman of the Council’s Historic Trails Committee, serving in this capacity from 1957 until 1984. He has been honored for his contributions to the Council’s hiking program. Other place names will be recognizable as names from the Philmont Scout Ranch.

### **Trail Camps**

Excellent sites for trail camps will be found at Pt Y, Schoolcraft Lake, and North Pond on the South Loop, and at Pt 10 and Pt 17 on the North Loop. Water will be available at these points except during extremely dry weather. All water should be treated before use. Campers should be careful with fire and should carry out all trash.

## **HIKING DIRECTIONS**

### **1. General Notes**

**Get organized.** Take a compass, trail instructions and topographic (Palmer and Shirley quadrangle) maps. It will be helpful if at least one member of the group has earned the Orienteering Merit Badge. One individual should be designated as the pace counter. The pace counter should measure his pace before the hike and adjust the number of paces in the hiking instructions if his pace differs significantly from 5 ft per two steps. Start keeping track of your position at Pt A so that if you have to abort the hike you will know whether to turn right or left on P to go to your car. Under the best of conditions this trail will be a challenge. The careless and disorganized will not complete the hike!

**Start early** if you want to take a one day hike and return home the same day. Allow 1½-2 hours to reach the trailhead from St. Louis (approx. intersection of Interstates 44 and 270) and start hiking by 8:30 am (9 am at the latest); otherwise darkness may overtake you before you finish the hike, especially in late fall through early spring.

### **2. South Loop**

Follow the instructions below from point to point. The reference points given are the ones shown on the trail map.

**Pt A to Pt B** – From the trailhead (a double blaze at the turnoff to the parking area from FR 2397), follow the forest road southeast about **220** paces to Pt B, where a faint logging road angles off to the right.

**Pt B to Pt C** – Follow this road in a generally southeast direction along a gradually descending ridge for **1000** paces to Pt C, a fork formed by the junction of a tributary creek with Clear Creek. (At **300** paces take the trail angling left of the logging road while continuing to follow the general direction of the ridgeline.)

**Pt C to Pt D** – Cross this tributary (an intermittent stream which enters Clear Creek from the left and may contain water) and go about **20** paces before continuing downstream on a 140° bearing which roughly parallels the left side of Clear Creek. It may be helpful to stay near the base of the hill to your left. Pt D, an intersection with a jeep trail, is about **260** paces from Pt C.

**Pt D to Pt E** – Go right **30** paces along the jeep trail to Pt E, where an abandoned road will intersect the road you are following from the right.

**Pt E to Pt F** – Turn right on the abandoned road. Follow this road, crossing Clear Creek in about **15** paces. Continue along an ascending NW ridge for about **380** paces to Pt F, which is at the top of the ridge.

**Pt F to Pt G** – Turn left and go cross-country on a 230° bearing, following a broad, descending ridge for **200** paces to a creek, Pt G.

**Pt G to Pt H** – Cross the creek and turn left. Follow the creek downstream in an east/southeast direction for **160** paces to where a small spring branch comes in from the right, Pt H.

**Pt H to Pt I** – Cross the spring branch and follow a 150° bearing **42** paces to Pt I.

**Pt I to Pt J** – Take a 190° bearing and go **250** paces, rising up the ridge until you intersect a faint road at Pt J.

**Pt J to Pt K** – Follow this road uphill in a southwesterly direction for **175** paces to Pt K, where it intersects a main forest road.

**Pt K to Pt L** – Turn left on this road and go east/southeast for **155** paces to a junction with a road which comes in from the right, Pt L.

**Pt L to Pt M** – Turn right on this road (in slightly east of south direction) and proceed down the ridge. At **550** paces you will have started to ascend the first small rise in the ridge, where the road turns 30-40° to the left. This is Pt M.

**Pt M to Pt N** – Turn right and go cross-country at a generally 250° bearing down a broad ridge for **150** paces to Pt N, about 50 feet from where the ridge drops abruptly to the creek bottom.

**Pt N to Pt O** – Turn left and go for **160** paces at a  $160^\circ$  bearing along the hillside to Miranda Meadows, Pt O, keeping the creek bottom on your right. Notice the sparkling quartz rocks on the hillside.

**Pt O to Pt P** – Follow a very faint path (approx  $200^\circ$  heading) for **30** paces to an old road. Continue on this road at a  $135^\circ$  bearing through a cedar grove past Beaubien Camp. At **340** paces from Pt O, a road comes in on the left. This is Pt P. Do not turn on this road.

**Pt P to Pt Q** – Continue to the east, crossing a creek at **185** paces (a good source of water). Continue on a faint logging road through the woods at a  $105^\circ$  bearing to Pt Q, which is about **15** paces past an intermittent stream crossing. Pt Q is **695** paces from Pt P.

**Pt Q to Pt R** – Grab a small rock for the cairn at Pt R. Turn left and proceed at a  $5^\circ$  bearing about **165** paces to Pt R, on the top of a small ridge. (Deposit your cairn rock.)

**Pt R to Pt S** – Veer to the left, staying on the ridge top, and continue for **180** paces at an approximate  $330^\circ$  bearing to Pt S, which is a definite high point at a tree on the crest of the hill.

**Pt S to Pt T** – Veer to the right and follow a  $0^\circ$  bearing (due north) along the crest of a long saddle on the ridge. Continue due north on this ridge to Pettibone Pond (on your right), at Pt T, about **220** paces from Pt S and a few paces north of the pond.

**Pt T to Pt U** – From the north side of the pond go **50** paces due north to a road, Pt U.

**Pt U to Pt V** – Turn left and follow the road, generally along a  $325^\circ$  bearing, about **440** paces to an intersection with a main forest road, Pt V.

**Pt V to Pt W** – Turn right on this road and go **130** paces to Pt W, which is marked by twin pines on the right side of the road and a double blaze.

**Pt W to Pt X** – Turn left and follow a generally  $0^\circ$  bearing down the ridge and nose for **360** paces to an intersection with a road, Pt X. (Good water source about 20 paces to the right.)

**Pt X to Pt Y** – Turn left on the road and cross Clear Creek in about **60** paces. Continue on the road, following a generally  $300^\circ$  bearing, about **200** paces from the Clear Creek crossing, to Pt Y, where a steep, uphill road intersects on the right. Note the hunters' campsite on the left. Note also that the steep road is about **50** paces past the end of a significant cliff about 50-60 ft back from the road on the right.

**Pt Y to Pt Z** – Turn right onto the steep road ( $40^\circ$  bearing) and follow it up the steep ridge nose **195** paces to the top of the first knob, Pt Z.

**Pt Z to Pt AA** – Veer left and follow the logging road along the peak of Senniger Ridge at a generally  $5^\circ$  bearing for about **500** paces to a rock cairn and double blaze, Pt AA, which is about **20** paces short of a logging road on your right.

**Pt AA to Pt BB** – Turn left and follow a  $255^\circ$  heading for **280** paces to the east side of Schoolcraft Lake, Pt BB. (At **80** paces from Pt AA you cross a logging road.)

**Pt BB to Pt CC** – Turn right and go about **75** paces along the eastern shore of the lake across a small valley and up into a grove of pines. This is a wonderful camping spot overlooking the lake just uphill from a point jutting out into the northwest shore. From the pine grove head up the ridge at a  $30^\circ$  bearing along a faint trail for about **230** paces. At this point the ridge changes direction. Follow at a  $50^\circ$  bearing for another **130** paces to an intersection with a dirt road, Pt CC.

**Pt CC to Pt DD** – Turn left and follow the road about **160** paces to a fork, Pt DD.

**Pt DD to Pt EE** – Turn left (approximately north) onto the side road which quickly turns to a  $320^\circ$  bearing and follow it for **65** paces to where a road comes in from the right (FR 2397). This intersection is Pt EE.

**Pt EE to Pt FF** – Continue at 290° on FR 2397 for **695** paces to a junction with FR 2397A, Pt FF.

**Pt FF to Pt GG** – Turn right on this road and proceed north for **350** paces to a slight rise in the ridge, Pt GG. A rock cairn and double blaze on the left of the trail mark this point. (At **170** paces you will pass North Pond, a nice spot to take a break or camp. The pond will be on your right.)

**Pt GG to Pt HH** – Leave the road on a 300° bearing and follow a descending ridge nose for **400** paces into and across Butcher Gulch to a faint road **6** paces east of a creek bed, Pt HH.

**Pt HH to Pt 1** – Turn left on this old road and follow it at a 210° bearing, paralleling the intermittent stream bed in Butcher Gulch for **155** paces to a rock cairn just past the east side of a rock outcrop on your right across the creek.

THIS ROCK CAIRN AND TWO DOUBLE BLAZES ON OPPOSITE SIDES OF THE SAME TREE MARK THE STARTING POINT OF THE NORTH LOOP HIKE. THIS HIKE IS DESCRIBED IN SECTION 3, BELOW.

**Pt 1 to Pt II** – To complete the South Loop hike, continue past the cairn along the old road, which crosses the creek at **100** paces. At another **40** paces, there is a rock cairn just prior to crossing the creek again. Turn at the cairn and follow a 235° bearing for **170** paces to Pt II (about **310** paces from Pt 1).

**Pt II to Pt A** – Crossing the faint creek bed, go **50** paces at a 155° bearing to the old logging road. Turn right on the logging road, which follows the ascending ridge in a generally southwest direction to the trailhead at Pt A (**350** paces from Pt II).

### **3. North Loop**

To start the North Loop hike, backtrack from the trailhead to the rock cairn between Pts. HH and II (see above), which is designated as Pt 1 for the North Loop hike.

**Pt 1 to Pt 2** – From the rock cairn, cross the creek at a 280° bearing to pick up a path on the other side. Go left on the path as it parallels this creek and then follows the right fork in the creek. Continue following the right creek fork in a generally 280° bearing past a draw that comes in from the right and on to Pt 2, another fork in the creek. Pt 2 is **320** paces from Pt 1 and is marked by a rock cairn and a double blaze.

**Pt 2 to Pt 3** – Follow the right fork of the creek (which is quite rocky) at a 295° bearing for **65** paces to Pt 3, a 2-wire power line.

**Pt 3 to Pt 4** – Continue hiking up the rocky draw for **68** paces to Pt 4, a major fork in the draw.

**Pt 4 to Pt 5** – Follow a 325° bearing from the fork up the steep nose between the two draws for **120** paces to Pt 5, across the paved Route P to its junction with gravel road FR 2472. Watch for oncoming cars!

**Pt 5 to Pt 6** – Follow FR 2472 for **102** paces to Pt 6, where a dirt logging road angles off to the north from FR 2472.

**Pt 6 to Pt 7** – Follow the dirt logging road along a ridge for **385** paces to Pt 7.

**Pt 7 to Pt 8** – Continue along the road at a 45° bearing for **570** paces (At **200** paces another trail forks left. Stay right!) down a gentle ridge to Pt 8, which is in a saddle and marked with a rock cairn and double blaze.

**Pt 8 to Pt 9** – Turn left and head 260° down a well-defined small ridge between two draws. Go for **150** paces to Pt 9, which is on the near side of a north-south creek.

**Pt 9 to Pt 10** – Turn north and follow the creek for **290** paces to Pt 10, where the creek passes under a major high-tension power line. (No double blaze here.)

**Pt 10 to Pt 11** – Turn left at a 275° bearing and follow the clear-cut under the power line for **150** paces to Pt 11, where FR 2472 passes under the power line. (No double blaze here.)

**Pt 11 to Pt 12** – Turn left at a 210° bearing and follow FR 2472 down then up a steep hill for **155** paces to Pt 12, where a logging road joins FR 2472 from the right.

**Pt 12 to Pt 13** – Turn right at a 300° bearing on the logging road and follow it for **260** paces back to the power line at Pt 13. (There are some nice scenic views over the cleared area to the left of the road.) (No double blaze here.)

**Pt 13 to Pt 14** – Follow the power line at a 285° bearing down a steep hill for **240** paces to a logging road on the left, Pt 14. (About **20** paces before this point there is a creek which also passes under the power line and which will need to be crossed.)

**Pt 14 to Pt 15** – Turn left on the logging road, which goes up a large creek valley at a 195° bearing, and continue for **325** paces to Pt 15, where a usually dry creek comes in from the right.

**Pt 15 to Pt 16** – Cross the dry creek. (Do not follow the logging road which ascends the ridge!) Continue on a 175° bearing, in the general direction of the main creek, for about **285** paces. Here, at Pt 16, the right bank of the creek is caved in where a minor fork enters from the right.

**Pt 16 to Pt 17** – Taking a 170° bearing, go **50** paces to the base of a north-south ridge nose, Pt 17.

**Pt 17 to Pt 18** – Ascend the ridge (190° bearing) for **200** paces to the end of a generally north-south logging road, Pt 18. (Road is about **4** paces to the right of Pt 18.)

**Pt 18 to Pt 19** – Follow the logging road in a generally southerly direction. Pick up a rock or two for the cairn at **300** paces that marks a trail junction. An ATV trail branches to the right. Stay left on the old logging road at a roughly 200° bearing. At **640** paces from Pt 18 will be the logging road's intersection with FR 2300, Pt 19.

**Pt 19 to Pt 20** – Turn left on FR 2300 and follow the road at a 135° bearing. Continue under a power line and on to the intersection of FR 2300 with paved road FR 2247 (also known as Pigeon Roost Rd.). This intersection will be **600** paces from Pt 19.

**Pt 20 to Pt 21** – Turn left on FR 2247, heading east for **90** paces to Pt 21. Here, a barely discernable abandoned road branches off to the right of the paved road.

**Pt 21 to Pt 22** – Turn right on the abandoned road and follow it at 120° for **65** paces to Pt 22, the intersection of the abandoned road with paved Route P.

**Pt 22 to Pt 23** – Cross Route P to the far side and hike the grassy shoulder of Route P at a 135° bearing for **220** paces to Pt 23, the intersection of Route P with gravel road FR 2397, which comes in from the left. Watch for oncoming cars!

**Pt 23 to Trailhead** – Relax; only a short way to go now! Turn left at a 60° bearing and follow FR 2397 for **138** paces back to the Schoolcraft trailhead.

Congratulations! You have used these directions, topo maps and your compass to find your way on this difficult trail.

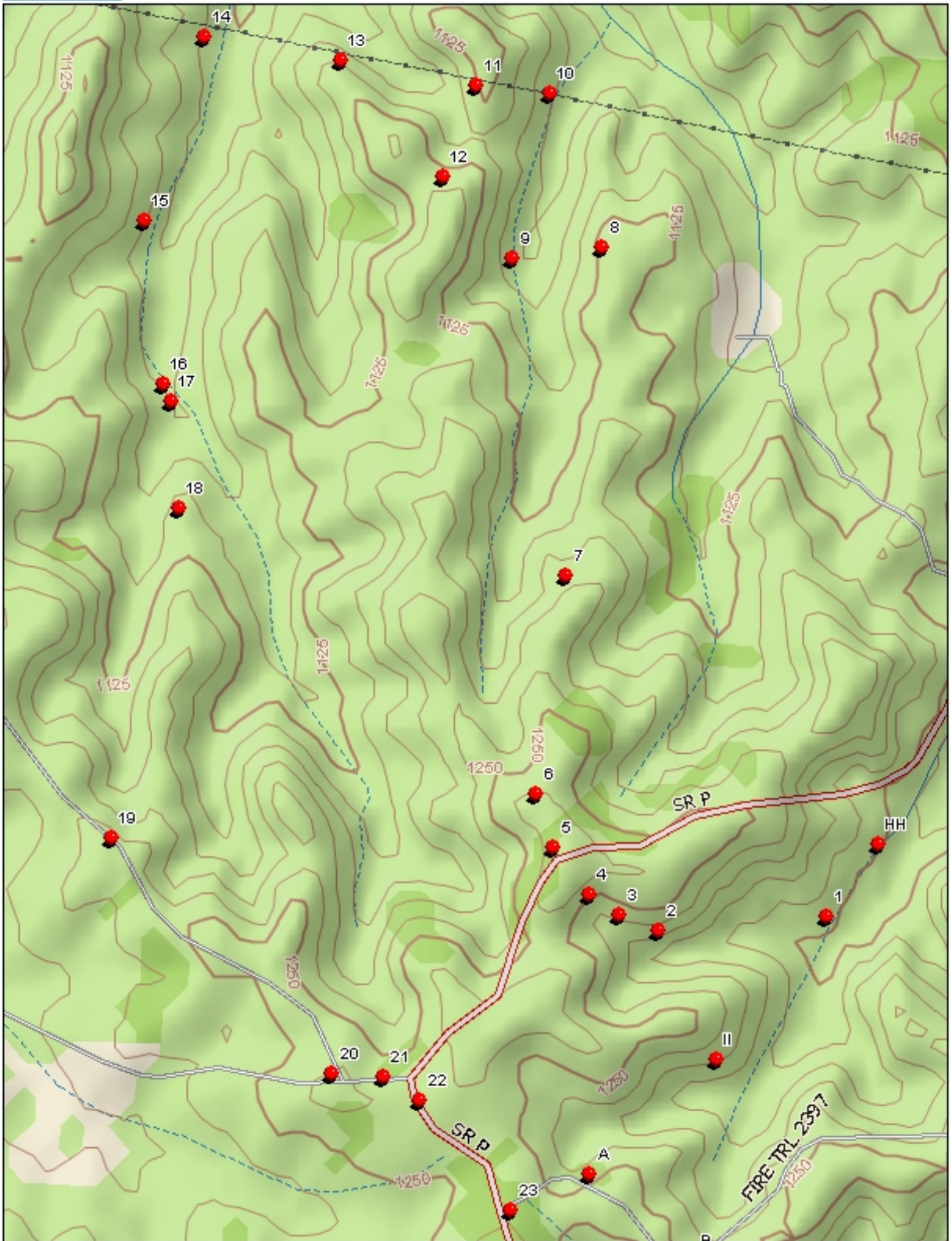
#### 4. GPS Navigation

For those who have a GPS and want a backup navigational aid, here are approximate GPS coordinates for each of the points on the trail.

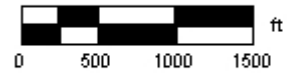
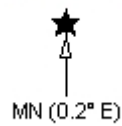
<b>Point</b>	<b>Latitude</b>	<b>Longitude</b>
A	37° 51' 20.3"	90° 54' 10.8"
B	37° 51' 13.3"	90° 54' 0.2"
C	37° 50' 39.8"	90° 53' 25.4"
D	37° 50' 31.2"	90° 53' 15.4"
E	37° 50' 29.8"	90° 53' 14.9"
F	37° 50' 36.5"	90° 53' 34.7"
G	37° 50' 31.3"	90° 53' 44.1"
H	37° 50' 28.8"	90° 53' 35.9"
I	37° 50' 27.7"	90° 53' 34.9"
J	37° 50' 16.7"	90° 53' 36.8"
K	37° 50' 12.8"	90° 53' 46.0"
L	37° 50' 10.2"	90° 53' 36.0"
M	37° 49' 45.1"	90° 53' 27.9"
N	37° 49' 42.0"	90° 53' 36.2"
O	37° 49' 35.8"	90° 53' 33.2"
P	37° 49' 28.2"	90° 53' 14.4"
Q	37° 49' 20.2"	90° 52' 38.6"
R	37° 49' 27.2"	90° 52' 38.6"
S	37° 49' 35.1"	90° 52' 43.8"
T	37° 49' 45.7"	90° 52' 43.3"
U	37° 49' 49.0"	90° 52' 45.5"
V	37° 50' 4.9"	90° 52' 59.5"
W	37° 50' 5.6"	90° 52' 51.6"
X	37° 50' 22.5"	90° 52' 51.6"
Y	37° 50' 25.5"	90° 53' 5.9"
Z	37° 50' 31.2"	90° 53' 0.1"
AA	37° 50' 52.0"	90° 52' 52.7"
BB	37° 50' 51.6"	90° 53' 7.7"
CC	37° 51' 5.7"	90° 52' 55.1"
DD	37° 51' 12.4"	90° 52' 51.7"
EE	37° 51' 15.1"	90° 52' 53.0"
FF	37° 51' 23.5"	90° 53' 32.0"
GG	37° 51' 38.0"	90° 53' 20.7"
HH	37° 51' 46.9"	90° 53' 41.3"
II	37° 51' 29.5"	90° 53' 57.8"
1	37° 51' 41.1"	90° 53' 46.6"
2	37° 51' 39.9"	90° 54' 3.8"
3	37° 51' 41.2"	90° 54' 7.8"
4	37° 51' 42.8"	90° 54' 10.8"
5	37° 51' 46.6"	90° 54' 14.6"
6	37° 51' 50.9"	90° 54' 16.3"
7	37° 52' 8.6"	90° 54' 13.2"
8	37° 52' 35.0"	90° 54' 9.5"
9	37° 52' 34.2"	90° 54' 18.8"
10	37° 52' 47.4"	90° 54' 14.9"
11	37° 52' 48.1"	90° 54' 22.5"
12	37° 52' 40.8"	90° 54' 25.8"
13	37° 52' 50.1"	90° 54' 36.3"
14	37° 52' 52.0"	90° 54' 50.2"
<b>Point</b>	<b>Latitude</b>	<b>Longitude</b>
15	37° 52' 37.2"	90° 54' 56.3"
16	37° 52' 24.0"	90° 54' 54.4"

17	37° 52' 22.6"	90° 54' 53.6"
18	37° 52' 14.0"	90° 54' 52.9"
19	37° 51' 47.4"	90° 54' 59.8"
20	37° 51' 29.0"	90° 54' 37.4"
21	37° 51' 28.1"	90° 54' 31.9"
22	37° 51' 26.3"	90° 54' 28.2"
23	37° 51' 18.5"	90° 54' 18.2"

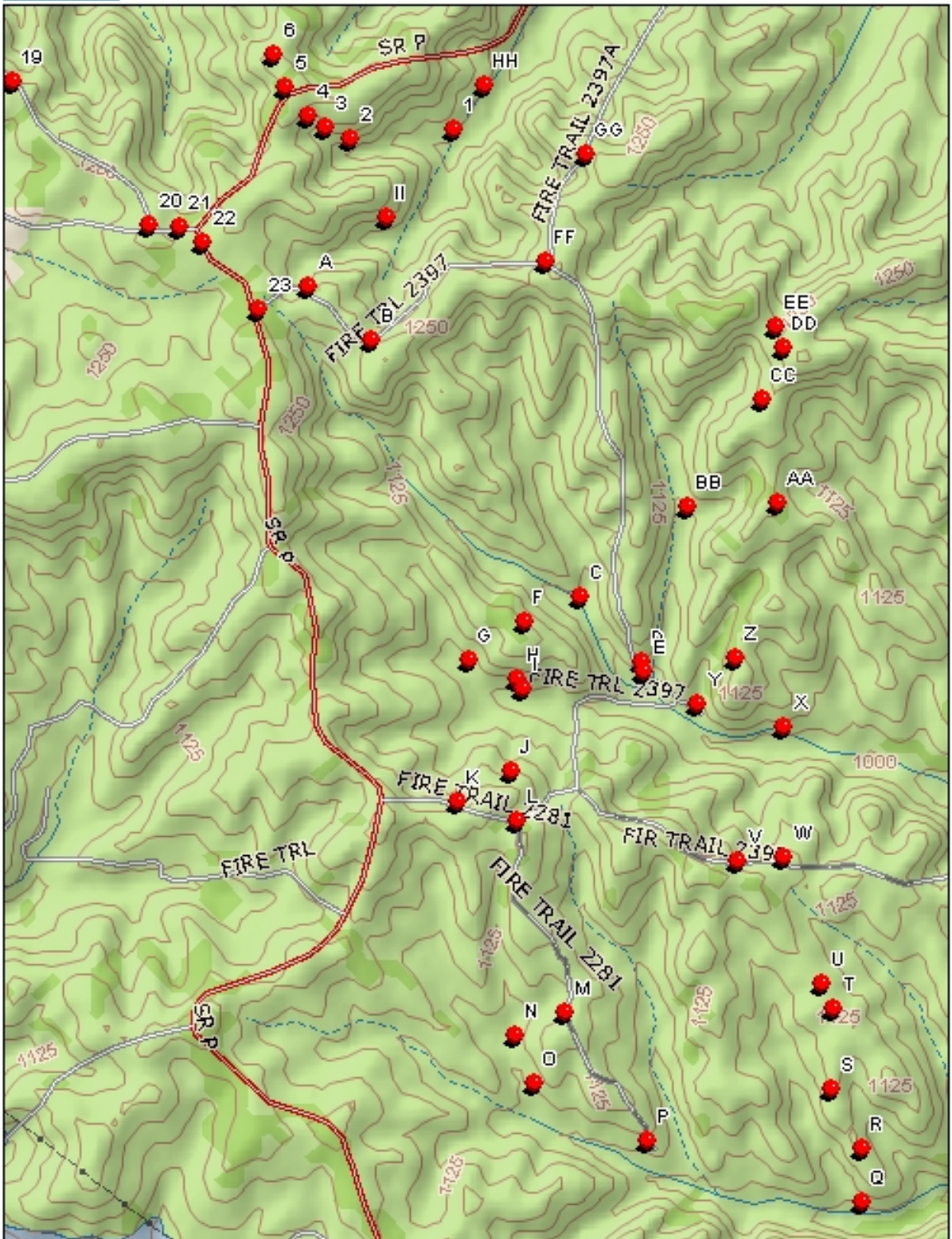




### Schoolcraft Trail North Loop



Data Zoom 13-3



Schoolcraft Trail  
South Loop

★  
MN (0.2° E)



Data Zoom 12-3



## Henry Schoolcraft Trail

From St. Louis take (21) south to (8). Turn right on (8) for 1 block, then turn left on (P) at the traffic light. Proceed 10.1 miles on (P) to Forest Road 2397. Turn left and follow the Forest Road 0.2 miles to the trailhead.

