

The Greater St. Louis
Area Council - Boy Scouts
of America

Scouts BSA Program Preview Guide

2020-2021

A comprehensive Scouts BSA
program guide for the Greater St.
Louis Area Council - Boy Scouts of
America for 2020 through 2021.



What's inside:

Get firsthand information on:

Membership

Programs and Events for 2020-2021

Trainings

Unit Planning and Budget Resources

Weekend Camping

GSLAC Properties

Product Sales

and MORE!

All specifically for SCOUTS BSA!

STLBSA.ORG

TABLE OF CONTENTS

UNIT RESOURCES

CONTACT US & COUNCIL MAP	P:4
COUNCIL SERVICE CENTERS	P:5
CALENDAR & BUDGET PLANNING	P:6-8
MEMBERSHIP & RECRUITMENT	P:10
SCOUTBOOK RESOURCES	P:11
JOURNEY TO EXCELLENCE	P:12

FUNDRAISING RESOURCES

POPCORN SALES	P:9
CAMP CARDS	P:9
FRIENDS OF SCOUTING	P:9

EVENTS AND PROGRAMS

TRAINING	P:13-15
EVENTS	P:16-17
SCOUTFEST	P:18

CAMPS

PROPERTIES	P:19-21
SUMMER CAMPS	P:22-26
JAMBOREE	P:27
OTHER RESOURCES	P: 28

Scouts BSA.

Scouting is the ultimate form of learning by doing. Youth lead their own activities and participate in service, outdoor adventures, and leadership development programs. Scouts are introduced to countless hobbies, interests, sciences, and even future career choices.

(girls and boys ages 11-17)



CONTACT US

Stay up to date on all of the Greater St. Louis Area Council's information and events by following us on social media and check our website often!



facebook.com/stlbsa



@stlbsa



@stlbsa

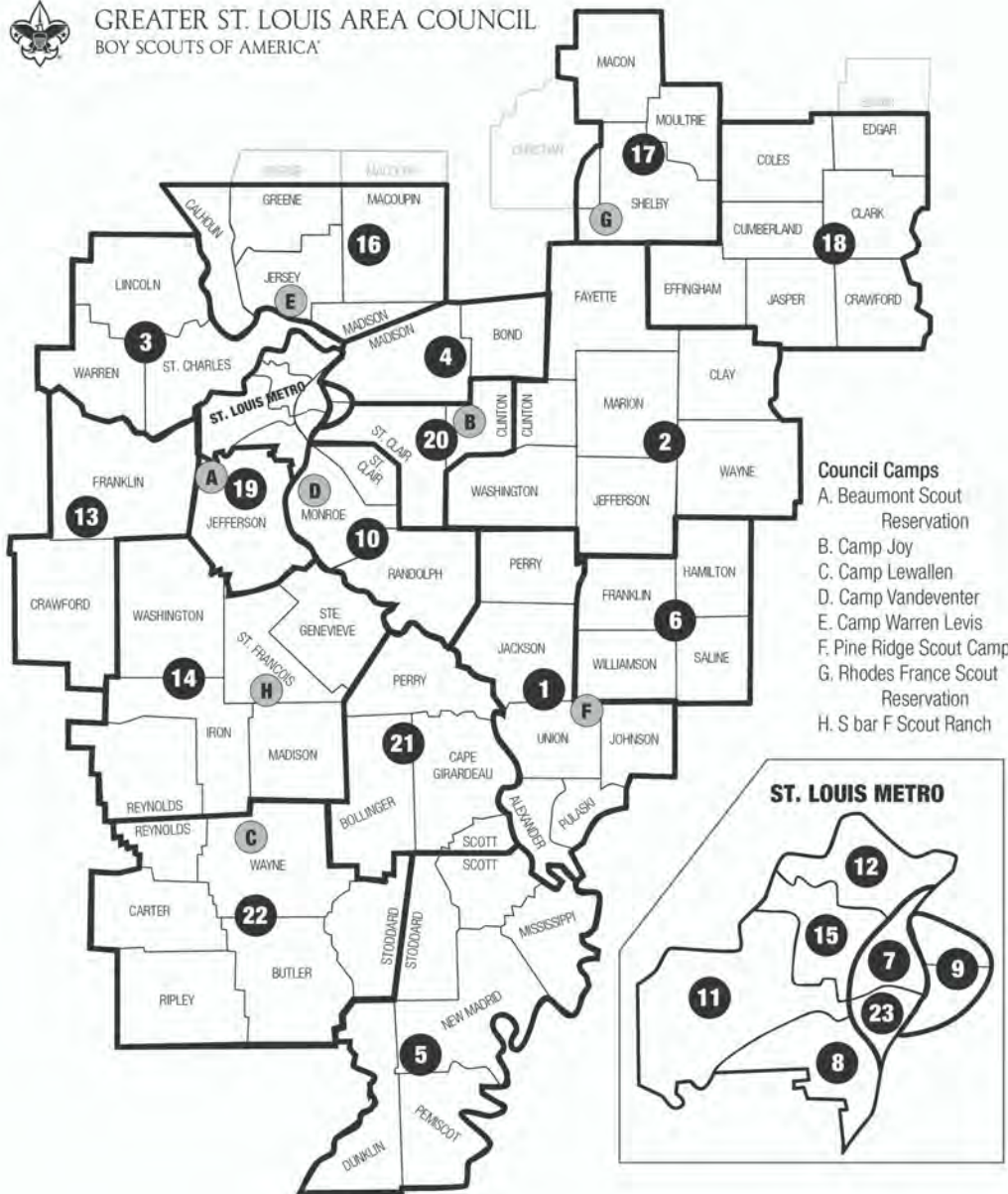
website: stlbsa.org

phone: 314-361-0600

email: pr@stlbsa.org



GREATER ST. LOUIS AREA COUNCIL
BOY SCOUTS OF AMERICA



Council Camps

- A. Beaumont Scout Reservation
- B. Camp Joy
- C. Camp Lewallen
- D. Camp Vandeventer
- E. Camp Warren Levis
- F. Pine Ridge Scout Camp
- G. Rhodes France Scout Reservation
- H. S bar F Scout Ranch

- | | | | |
|----------------------------|---------------------------|---------------------------------|---------------------------|
| 1. Big Muddy District | 7. Grand Towers District | 13. Osage District | 19. River Trails District |
| 2. Black Gold District | 8. Gravois Trail District | 14. Ozark Trailblazers District | 20. St. Clair District |
| 3. Boone Trails District | 9. Illini District | 15. Pathfinder District | 21. Shawnee District |
| 4. Cahokia Mounds District | 10. Kaskaskia District | 16. Piasa Bird District | 22. Sioux District |
| 5. Cherokee District | 11. New Horizons District | 17. Arrowhead District | 23. Thunderbird District |
| 6. Egyptian District | 12. North Star District | 18. Redhawk District | |

COUNCIL SERVICE CENTERS

We are here for you.

All service centers are open Monday- Friday
8:30AM- 5PM. A Scout Shop is also available at
each location.

MacArthur Service Center

4568 West Pine Blvd., St. Louis, MO 63108
314-361-0600 or 800-392-0895

Central Illinois Service Center

262 W. Prairie Ave., Decatur, IL 62523
217-429-2326

Cohen Service Center

335 West Main St., Belleville, IL 62220
618-234-9111

Ritter Service Center

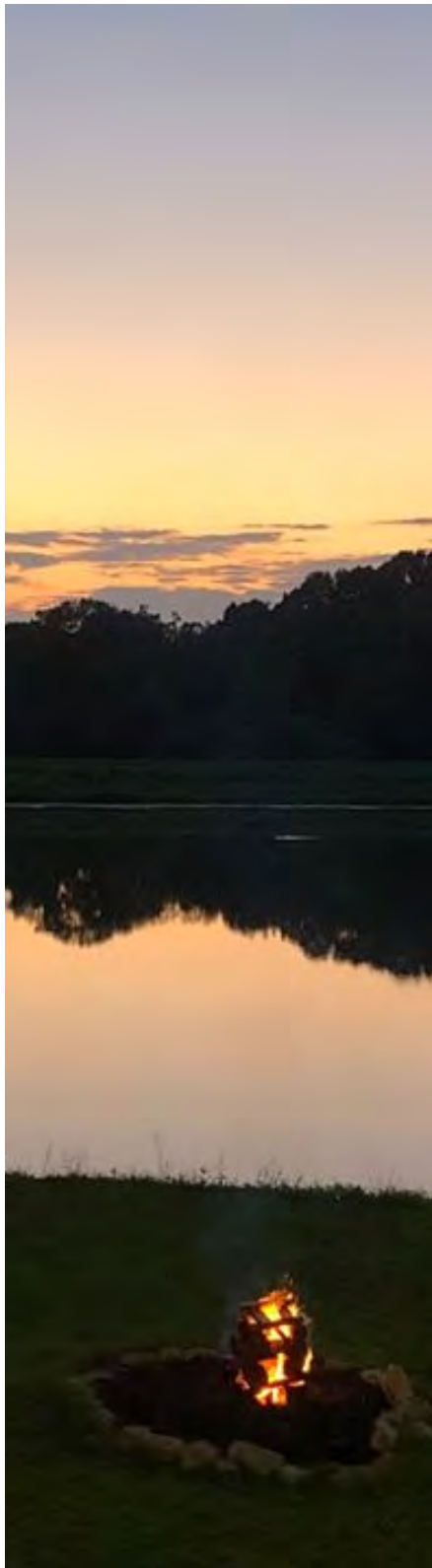
3000 Gordonville Rd.,
Cape Girardeau, MO 63703
573-335-3346 or 800-335-3346

Southern Illinois Service Center

803 East Herrin St., Herrin, IL 62948
618-942-4863 or 888-942-4863

BSA Outfitters

13347 Manchester Rd.,
Des Peres, MO 63131
314 -984-0014



CALENDAR & BUDGET

PROGRAM DEVELOPMENT

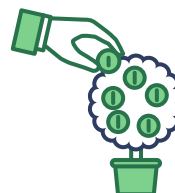
Every Scout deserves a fun, robust, educational and exciting program! Creating a plan at the beginning of the year will help ensure success for your Troop and Scouts!

- First, brainstorm about fun activities, adventures, and experiences your troop could have this year. Include all the Scouts and parents, if you can, to get the most and best ideas:
 - What council and district level activities will you include, like summer camps, fall events, trainings, etc.?
 - What resources do you have in your unit? Are there parents who work at locations where you could do tours, service projects or outings such as the local fire station, radio/tv station, or cultural institutions like museums or historic sites?
 - What are some fun activities you may want to include, however big or small, like picnics, a trip to Six Flags, weekend camp outs, etc.?
 - Reach out to your unit commissioner, as well, while you are going through the process. It is that individual's job to help your unit have a healthy program.
- Next, your troop committee can review all the suggestions, narrow down to the activities that make sense for your unit, and plan on when they make the most sense to do.
- Lastly, communicate the plan to your families. That can be as simple as a printed list with the event dates to be handed out at meetings or emailed out. You could also use the talents of a parent or leader and take advantage of the services offered in Scoutbook to communicate events via calendars and reminders, create Facebook events, or create a Google calendar. Some times the best method of communication is a variation of multiple mediums!"

BUDGET & FUNDING

Program planning needs to also include a funding plan. Use the budget planning tool on the next page to see how much your year of Scouting will cost, and what your individual Scout and/or troop fundraising goals should be.

See a sample budget worksheet on the next page:



SAMPLE BUDGET WORKSHEET

Greater St. Louis Area Council

Troop Operating Budget

Program Expenses		Annual Cost per Scout/Unit	Number of Scouts / Adults	Total Unit Cost
Registration Fees	# Youth	\$ 60.00		\$0.00
Registration Fees	# Adults	\$ 36.00		
Charter Fee	Yearly flat fee	\$ 40.00		\$40.00
Boys' Life Subscription	1/household	\$ 12.00		\$0.00
Advancement	This depends on how much youth are advancing. Example, \$10/youth/year	\$ 10.00		\$0.00
Recognition	1 for each youth (Thank you's, Veteran Awards, etc.)	\$ 10.00		\$0.00
Camping Trips	<u>Location</u>			
	Camping Trip A			\$0.00
	Camping Trip B			\$0.00
	Camping Trip C			
	Camping Trip D			
	Camping Trip E			\$0.00
	Camping Trip F			\$0.00
District Events				
	Event 1			\$0.00
	Event 2			\$0.00
Summer Camp				\$0.00
	Youth			\$0.00
	Adults			\$0.00
Program Materials	Ceremony supplies, den projects, camping items, etc.			\$0.00
Troop Equipment	Tents, stoves, etc.			
Leader Training				\$0.00
Reserve Fund				\$0.00
Other Expenses				\$0.00
Total Budgeted Program Expenses				\$40.00
Income				
Annual Dues				\$0.00
Surplus from prior year	(Beginning fund balance)			\$0.00
Other Income	(Parent payments, etc.)			\$0.00
Income subtotal				\$0.00
Fund-raising needed				(\$40.00)

This is an example, your budget may include more or fewer lines, depending on your program.





CALENDAR PLANNING

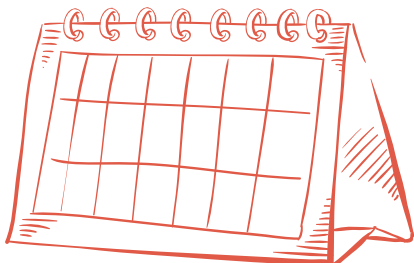
The yearly calendar planning process is important for each troop.

One of the key elements of all successful units is the Annual Program Plan and Planning Conference. Research has shown that a common element of a strong unit is a good annual program planned a year in advance that is then shared with all families in the form of a calendar. The important result of a shared annual program calendar is that a unit will attract more families and Scouts will stay involved longer.

SAMPLE CALENDAR PLANNING CHART

Month	Meeting Plan						Special Events/ Holidays	Local/ Chartered Organization Calendars	Council/ District	PLC/YOA	Unit Committee Meeting	Roundtable
	Program Feature/ Topic	Meeting 1	Meeting 2	Meeting 3	Meeting 4	Main Event						
September												
October												
November												
December												
January												
February												
March												
April												
May												
June												
July												
August												

Check out the Troop Annual Program Planning Conference Guide at <https://www.scouting.org/programs/scouts-bsa/program-planning-tools/>



FUNDING YOUR PROGRAM

Popcorn Sales benefit your unit and help fund the council camp scholarships, Scouting for Food, and much more!

- There is no up-front cost to your unit.
- Units pay for only the product they sell.
- Sales support local Scouting.
- A built-in prize program encourages Scouts to sell.
- Popcorn sales teach Scouts the responsibility and value of earning their way.
- Popcorn is easy to sell.
- Scouts can earn free camping at a Greater St Louis Area Council camp of their choice!
- Sign up at www.popcorn.stlbsa.org.
- Sale begins in August and runs through December.

Sell through

1. *Show & Sell* (sell in person at a display table or booth),
2. *Take Order* (ask neighbors and friends to place an order),
3. *Online Sales* (create your own online store through our vendor)



Camp Cards are an easy sale that help Scouts earn funds for camps and activities!

- Sale begins 2/1/2021 and ends 4/9/2021
- Earn 50% profit on every card sold
- Cards by are different by region, supporting local businesses
- Visit www.campcard.stlbsa.org to learn more



Friends of Scouting (FOS) is the annual giving campaign of the Greater St. Louis Area Council. The FOS campaign provides nearly 20% of the council budget every year. That means that a significant portion of the council budget comes from the generosity of Scouting families, alumni and community supporters. Without this funding, our council could not supply the resources necessary to provide a quality, adventure-filled Scouting program.

Each gift to the council provides tremendous assistance for:

- insurance for leaders and participants
- improving camp properties for your Scouts and future Scouts
- financial assistance for families in need
- volunteer training and support
- growing the Scouting program



MEMBERSHIP

We believe that Scouting is the best leadership and character development program for youth and strive to ensure that every child in every community has the opportunity to join. As a leader in your unit, you can ensure other families in your community receive that invitation, while also ensuring that your unit grows and continues to thrive and provide life changing program for kids.

How to grow your troop

Most families join Scouts BSA troops when an Arrow of Light Scout finishes the Cub Scout program and graduates into Scouts BSA, mid-spring.

Best practices to ensure your Troop is growing are:

- Build a relationship with the local Cub Scout pack(s) so that when their Scouts are ready to cross over, they already are familiar and comfortable with your troop.
- Host a troop open house every year. Families locations and schedules are ever changing, so some Scouts will join your troop because they are new to the community or are looking for new and different activities.
- Encourage Scouts to recruit their friends, perhaps by having every Scout invite a friend to attend a certain activity or event with the troop.

*For resources and ideas to help with recruiting, visit:
<https://stlbsa.org/programs/recruitment/>*



SCOUTBOOK



Scoutbook is your online resource to assist with managing your unit. Included in this free app are calendars, award tracking, and other tools including ways to communicate with parents.

SCOUTBOOK IS FREE FOR EVERYONE REGISTERED IN SCOUTING.



Want to know if your unit has a healthy program? Check out the Journey to Excellence score sheet on the next page! You can also use this as a tool to develop your annual program.



Troop _____ of _____ District
2020 Scouting's Journey to Excellence
"The BSA method for annual planning and continuous improvement"

Item	Objective	Bronze Level	Silver Level	Gold Level	Bronze Points	Silver Points	Gold Points
Planning and Budget					Total Points: 200		
#1	Planning and budget: Have a program plan and budget that is regularly reviewed by the committee, following BSA policies related to fundraising.	Have an annual program plan and budget adopted by the troop committee.	Achieve Bronze, plus troop conducts a planning meeting involving youth leaders for the following program year.	Achieve Silver, plus troop committee meets at least six times during the year to review program plans and finances.	50	100	200
Membership					Total Points: 500		
#2	Building Scouting: Recruit new youth into the troop in order to grow membership.	Have a membership growth plan that includes a recruitment activity and register new members in the troop.	Achieve Bronze, and either increase youth members by 5% or have at least 25 members.	Achieve Silver, and either increase youth members by 10% or have at least 35 members.	50	100	200
#3	Retention: Retain a significant percentage of youth members.	Reregister 75% of eligible members.	Reregister 80% of eligible members.	Reregister 85% of eligible members.	50	100	200
#4	Webelos-to-Scout transition: Have an effective plan to recruit Webelos Scouts into the troop.	With a pack or Webelos den, hold two joint activities.	Achieve Bronze, plus recruit two Webelos Scouts.	Achieve Bronze, plus provide at least one den chief to a pack and recruit five Webelos Scouts.	25	50	100
Program					Total Points: 900		
#5	Advancement: Achieve a high percentage of Scouts earning rank advancements.	40% of Scouts advance one rank during the year.	50% of Scouts advance one rank during the year.	60% of Scouts advance one rank during the year.	50	100	200
#6	Short-term camping: Conduct short-term or weekend campouts throughout the year.	Conduct four short-term overnight campouts.	Conduct seven short-term overnight campouts.	Conduct nine short-term overnight campouts.	50	100	200
#7	Long-term camping: Participate in a long-term camp with a majority of the troop in attendance.	The troop participates in a long-term camp.	60% of Scouts attend a long-term camp.	70% of Scouts attend a long-term camp.	50	100	200
#8	Service projects: Participate in service projects, with at least one benefiting the chartered organization.	Participate in three service projects and enter the hours on the JTE website.	Participate in four service projects and enter the hours on the JTE website.	Participate in five service projects and enter the hours on the JTE website.	25	50	100
#9	Patrol method: Use the patrol method to develop youth leaders.	The troop has patrols, and each has a patrol leader. There is an SPL, if more than one patrol. The PLC meets at least four times a year.	Achieve Bronze, plus PLC meets at least six times. The troop conducts patrol leader training.	Achieve Silver, plus PLC meets at least ten times. At least one Scout has attended an advanced training course, such as NYLT or Order of the Arrow Conference.	50	100	200
Volunteer Leadership					Total Points: 400		
#10	Leadership and family engagement: The troop is proactive in recruiting sufficient leaders and communicates regularly with parents.	Have at least one registered assistant Scoutmaster.	Achieve Bronze, plus the troop holds two courts of honor, where troop plans are reviewed with parents.	Achieve Bronze, plus the troop holds three courts of honor, where troop plans are reviewed with parents.	50	100	200
#11	Trained leadership: Have trained and engaged leaders at all levels. All leaders are required to have youth protection training.	Scoutmaster or an assistant Scoutmaster has completed position-specific training.	Achieve Bronze, plus the Scoutmaster and 60% of assistants have completed position-specific training or, if new, will complete within three months of joining.	Achieve Silver, plus two-thirds of active committee members have completed position-specific training and at least one person has attended an advanced training course involving a total of at least five days.	50	100	200

Bronze: Earn at least 525 points by earning points in at least 7 objectives.

Total points earned: _____

Silver: Earn at least 750 points by earning points in at least 8 objectives.

Gold: Earn at least 1,000 points by earning points in at least 8 objective and at least Bronze in #6 or #7.

No. of objectives with points: _____

Our troop has completed online rechartering by the deadline in order to maintain continuity of our program.

We certify that these requirements have been completed.

Get the full form here

Scoutmaster _____ Date _____

Committee chair _____ Date _____

Commissioner _____ Date _____

This form should be submitted to the Scout service center or your unit commissioner, as directed by your council.



YOUTH PROTECTION TRAINING

PROTECTING OUR YOUTH CAN ONLY BE ACHIEVED BY EVERYONE COMMITTING TO THAT PROTECTION.

The BSA places the highest importance on providing a secure environment for all Scouts. Youth Protection Training is required for all BSA -registered volunteers- regardless of position- and must be completed every two years. However, you do not have to be registered member of the BSA to take the training. Every parent involved in Scouting is encourage to complete the course which is available 24/7 at my.scouting.org

- No new leader can be registered without first completing the training.
- No Unit may re-charter without all leaders current on their Youth Protection Training.
- Adults accompanying a Scouting unit who are present at the activity for 72 total hours or more must be registered as a leader, including completing criminal background check and Youth Protection Training. The 72 hours need not be consecutive.

Take it now at: scouting.org/youthprotection



TROOP LEADER TRAININGS

Get trained and put on the best program ever.

A trained leader is knowledgeable and more confident in their role.

- Trained leaders
- impact the quality of programs
 - leader tenure
 - youth tenure
 - safety
 - and whole lot more!

In short, a trained leader is better prepared to make the Scouting program all it can be!



E-LEARNING AT [MY.Scouting.org](https://my.scouting.org)

Visit my.scouting.org to create an account from which you can access dozens of training courses to help you be a better prepared leader in your unit.

UNIVERSITY OF SCOUTING

JANUARY 23, 2021

Southern Illinois University Edwardsville, SIUE

University of Scouting is a one-day event offering the widest variety of training opportunities in all program areas, all in one place. This training event is for all registered leaders, covering a plethora of topics, from shooting sports, to basic leader training.

INTRO TO OUTDOOR SKILLS TRAINING (IOLS)

**OCTOBER 16-18, 2020, BEAUMONT SCOUT RESERVATION
MAY 7-9, 2021, BEAUMONT SCOUT RESERVATION
MORE DATES AND LOCTIONS ADDED THROUGHOUT THE YEAR**

Along with Scoutmaster Specifics, this course is required of all direct contact leaders registered in Scout troops in order to be considered "trained." The Introduction to Outdoor Leader Skills (IOLS) course builds and expands on the concepts and themes introduced in Scoutmaster Position-Specific Training and provides Scouters with the confidence to take youth into the outdoors.

WOOD BADGE

**FALL 2020 COURSES: AUGUST 21-23 AND SEPTEMBER 5-6, BEAUMONT SCOUT RESERVATION; AND
AUGUST 28-30 AND SEPTEMBER 19-20, 2020, BEAUMONT SCOUT RESERVATION;**

SPRING 2021 COURSE: MAY 21-23, 2021 AND JUNE 5-6, 2021 BEAUMONT SCOUT RESERVATION

Advanced adult leader training designed to enhance leadership skills and develop more effective leaders. The Wood Badge program gives participants a greater understanding of Scouting aims and methods.

SPECIAL NEEDS AWARENESS TRAINING

**JUNE 6, 2020, CAMP JOY
DECEMBER 12, 2020, BEAUMONT SCOUT RESERVATION
APRIL 10, 2021, CAMP VANDEVENTER**

For all ages. There will be activities for Cub Scouts and Disabilities Awareness Merit Badge for Scouts BSA. Attend this training with professionals in the field of Special Needs and Education for the opportunity to learn how to provide the best services for every Scout.



SCOUTS BSA YOUTH TRAININGS



Get trained this year!

National Youth Leadership Training (NYLT)

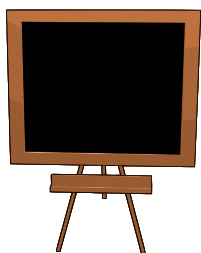
NYLT is advanced training for youth leaders in Scouts BSA troops and Venturing crews. Throughout this week-long outdoor training conducted during summer camp, Scouts grow and improve their leadership skills while following the guidelines of the Scout Oath and Law.

NYLT offers a land-based and water-based course. The water-based course, called Pack and Paddle, is conducted in the S bar F Scout Ranch back country and on Nims Lake. In addition to leadership skills, participants also practice low-impact camping, hiking, canoeing, and learn the proper use of compass for navigation.

June 13-19 Camp Sakima S-F,
June 20-26 Camp Sakima S-F,
June 27-July 3 Camp Sakima S-F,
July 11-17 Camp Sakima S-F,
July 25-31 Camp Warren Levis.



Den Chief Training



A den chief is a Scouts BSA Scout who assists a Cub Scout leader at den and pack meeting and other Scouting events. Den Chief training is for Scouts who desire a leadership role and are interested in working with younger Scouts.

Check out our council website for training dates coming in Fall 2020 and Spring 2021!

GOOD TURN EVENTS

DO A GOOD TURN FOR YOUR COMMUNITY.

A service project is a special Good Turn that puts Scout spirit into action. Projects can take many forms such as a community cleanup, repairing a place of worship, improving a wildlife habitat, or organizing a recycling effort.

Be sure to report all service hours. We want to keep track of all the good Scouting does for the community, and it is a key measurement goal in the Journey to Excellence program. Last year, Scouts in the Greater St. Louis Area Council performed 226,077 hours of service to their communities.

To easily log your unit's service hours, visit <https://stlbsa.org/activities/community-service-log/>



SCOUTING FOR FOOD

NOVEMBER 14, 2020 | BAG DISTRIBUTION DAY
NOVEMBER 21, 2020 | BAG COLLECTION DAY

SFF.STLBSA.ORG

Scouting for Food is the council's annual service project and the largest one-day food drive in the Boy Scouts of America.

The campaign is launched on "Bag Distribution Day" when Scouts distribute more than 1 million plastic bags to residences. The Scouts return to neighborhoods the following week on "Bag Collection Day," to retrieve the bags filled with donated non-perishable food.

Each year, Scouting for Food collects about 2 million items of food— enough to provide more than 1.5 million meals for those in need.

MEMORIAL DAY GOOD TURN

MAY 24, 2020
MAY 29, 2021

**Jefferson Barracks National Cemetery and
United Hebrew Congregation (St. Louis)**

STLBSA.ORG/MEMORIAL-DAY-GOOD-TURN



For more than six decades, Scouts have been decorating graves with an American flag to honor veterans for Memorial Day.

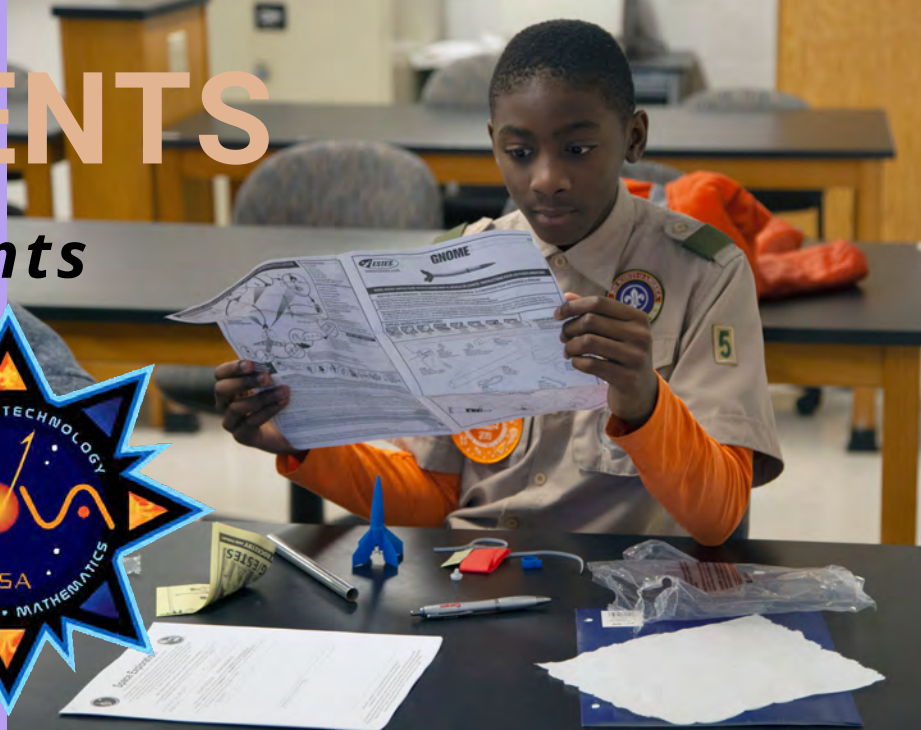
At Jefferson Barracks National Cemetery, the tradition, entering its 72ND year, is one of the longest running Memorial Day events within the Boy Scouts of America. This Good Turn begins with a solemn procession into the cemetery and short 30-minute ceremony honoring deceased military personnel. Following the ceremony, Scouts and Venturers place an American flag at more than 150,000 graves throughout the cemetery.

Members of all religions and ages are also invited to help place over 7,000 flags on the graves of our war veterans at St. Louis area Jewish cemeteries. The event is sponsored by the Jewish War Veterans and the Jewish Committee on Scouting. Youth perform a brief ceremony at each grave site for a meaningful experience.

Scouts of all ages and from all districts are invited to participate in both Good Turn events.

STEM EVENTS

***Must-attend events
and Activities!***



STEM U

November 7, 2020 Southern Illinois University
December 12, 2020, University of Missouri St. Louis
January 9, 2021, Southeastern Missouri State University
February 20, 2021, Southern Illinois University Carbondale

SCOUTS BSA NOVA DAY

March 13, 2021, Saint Louis Science Center

**SCOUTS BSA
NOVA DAY
SPLASH!**

AT THE SAINT LOUIS SCIENCE CENTER



SCOUT 17
STLBSA.ORG

STEM EVENTS

STEM ON CAMPUS

June 6-9, 2020, Southeastern Missouri State University
June 9-12, 2020, Webster University



**Cancelled in
2020,
Returning in
2021.**

SCOUTS BSA STEM CAMP

JUL 18- 24 | Camp May-Beaumont Scout Reservation



MOBILE STEM LAB!! AVAILABLE

THE MOBILE STEM LAB IS A SELF-CONTAINED LAB/MAKERSPACE STOCKED WITH ACTIVITIES AND MATERIALS TO BRING SCIENCE, TECHNOLOGY, ENGINEERING, AND MATHEMATICS TO YOUR CAMP, UNIT MEETING, OR OTHER EVENT!

SCOUT
18
STLBSA.ORG



PROUDLY PRESENTED BY:

CENTENE[®]
Corporation

 World Wide Technology

Activities to Look Forward to:

- Climbing Towers
- BB Guns
- Archery
- Obstacle Courses
- Escape Rooms
- Blacksmithing
- Ferris Wheel
- Axe Throwing
- Lumberjack Games
- Fishing
- Duty to God
- Kayak Races
- Drone Demos
- Crate Stacking
- Mini Golf
- Virtual Reality
- Slack Lines

Full ScoutFest Event Guide at:
www.scoutfest2020.com

ScoutFest 2020

October 2-4, 2020

Forest Park, St. Louis, MO

ScoutFest 2020 is a once-a-decade, regional Scouting camporee organized by the Greater St. Louis Area Council, presented and supported by Centene Charitable Foundation and World Wide Technology.

Expected attendance is 20,000 people across one weekend in Forest Park, the largest Scouting gathering in the country in 2020! ScoutFest 2020 is open to the whole family, including Cub Scouts, to camp overnight in St. Louis's iconic park. Exciting program and activities are currently being developed by volunteers and youth, and will include live performances and fireworks on Art Hill, STEM and robotics, climbing walls, water sports, competitions, and much more!

Website: scoutfest2020.com

Facebook: /scoutfest2020

Instagram: @scoutfest2020

Snapchat: @scoutfest2020

Email contact: scoutfest2020@scouting.org





CAMP PROPERTIES

COME EXPLORE WITH US

Beaumont Scout Reservation:

In Southwestern St. Louis County sits 2,400 acres of wooded, rolling hills and adventure called Beaumont Scout Reservation. This multi-use property is located just 20 minutes from downtown St. Louis.

Beaumont offers countless activities and facilities for Scouts, featuring:

- New climbing complex
- Mud Cave exploration
- Swimming pool
- High and low challenge courses
- Cub World
- Nagel Explorer Base (home of the council's horse programs)
- 8 Cabins (including climate-controlled options)

At the heart of Beaumont is the Emerson Center, a multi-use dining and meeting facility. This building includes:

- 5,000+ square foot dining hall
- Climate-controlled comfort
- Two built-in AV areas
- Large industrial kitchen
- Multiple breakout rooms

The Emerson Center is commonly used for Blue and Gold banquets, Courts of Honor, various trainings, and other large events.



Visit www.stlbsa.org for more information about the properties and to make reservations.

CAMP PROPERTIES

COME EXPLORE WITH US

S bar F Scout Ranch:

One of the foremost Scout camps in America, "The Ranch" features 5,200 wooded acres including Nim's Lake, a 270-acre swimming, boating, and fishing facility at the heart of the property. The 3-Notch Trail system explores all points of S-F and offers a great experience for backpacking, trail cooking, and team building.

Leadership Hall is our 16,000 square foot climate-controlled dining facility, complete with AV capabilities, private restrooms, and a large stone fireplace.

S-F features the "tree houses," which are elevated, 3-sided bunk structures on the edge of Nim's Lake. Additional cabins are located near the camporee field and at Swift Base. Adirondack and tipi camping is also available. Don't forget to visit Castle Rock, one of the most popular destinations at S-F!

Camp Warren Levis:

Camp Warren Levis, located just north of Alton IL, is 250 rolling acres of outdoor fun. A beautiful private lake accommodates boating and fishing activities.

Swaim Lodge Dining Hall, is climate controlled in the winter and seats up to 200 people.

Program Areas include a bouldering wall, canoes, pedal boats, council ring, GaGa pit, pool, archery, BB guns, rifle, climbing/rappelling at Pere Marquette State Park, and a chapel.

Camp Lewallen:

Located along the St. Francis River in Southeast Missouri, Camp Lewallen features a new Climbing Complex, all terrain vehicle programs, a serene private lake, and large open fields.

The Earl Jarvis Dining Hall is a large dining facility with plenty of meeting room space and a large fireplace.

Mount Logan serves as the backdrop to this Scouter's paradise, and features two trails to explore its beautiful view.

Visit www.stlbsa.org for more information about the properties and to make reservations.

SCOUT 20
STLBSA.ORG



CAMP PROPERTIES

COME EXPLORE WITH US

Camp Joy:

Camp Joy, in Carlyle IL, features a private 12-acre lake, beautiful council ring, large pavilion, first-class shooting range, and a complete challenge course.

Campers return to Joy year-after-year to paddle on the lake, learn all about shooting sports, go fishing and hiking, and much more!

Rhodes France Scout Reservation:

Rhodes France is located south east of Pana IL, and is 640 acres of Scouting paradise.

With two lakes, an in-ground swimming pool, excellent shooting sports facilities, and a well-stocked trading post, Scouts will never be short of things to do.

Camp Vandeventer:

Camp Vandeventer is located near Waterloo, Illinois surrounded by beautiful scenery including bluffs and a large creek. Amenities include a large dining hall, chapel, shooting range, a creek, a fort, and a trail that goes through camp.

Scouts come from all over to experience the natural rock climbing and rappelling cliffs located in the heart of camp!

Pine Ridge Scout Camp:

Tall pines, abundant wildlife, Little Grassy Lake, and beautiful sunsets make Pine Ridge Scout Camp an excellent location for Scouts. This 150-acre camp is just southeast of Carbondale, Illinois. Rock climbing, kayaking, canoeing, fishing, and more are all available at Pine Ridge.

Two cabins, a dining facility and pavilion, and many beautiful campsites are available for your unit to enjoy.



Visit www.stlbsa.org
for more information about the
properties and to make reservations.

SCOUT 21
STLBSA.ORG

THE BEST SUMMER YET



SCOUTS BSA SUMMER CAMP

- STEM
- WIFI
- FISHING
- DINING HALL & PATROL
- COOKING
- FAMILY NIGHTS
- ATVs
- 55+ MERIT BADGES
- HUCK'S COVE WATER PARK
- WATER SPORTS
- WATER CARNIVALS
- SPECIALTY CAMPS FOR INDIVIDUAL SCOUTS
- HORSES
- ADULT LEADER TRAINING
- GAGA BALL & HUMAN FOOSBALL
- TENT PLATFORMS
- FANTASTIC CAMP STAFF
- SPORTING ARROWS
- COMPETITIONS
- DISCOUNTS AVAILABLE

Check out the Scouts BSA Summer Camp webpage for date, registration, and discount information.

STLBSA.ORG



SCOUTS BSA SUMMER CAMP

6 CAMPS TO CHOOSE FROM!

CAMP LEWALLEN

All Terrain Vehicle Program
3-Part Climbing Complex
St. Francis River floating
Mt. Logan overnight treks
Cooking competitions
Renowned First-Year Camper Program

CAMP GAMBLE @ S-F Scout Ranch

270-acre Nim's Lake
Water sports
Fishing & Fly Fishing
Patrol method cooking
STEM merit badges & Nova awards
Horsemanship
Huck's Cove Water Park

RHODES FRANCE SCOUT RESERVATION

BSA Lifeguard training
Horsemanship
Pistol Safety & Marksmanship
Pathfinder first-year camper program
Baden Powell Patrol Award
Duty to God
Trailblazers Merit Badge Program



LEARN MORE & REGISTER:

<https://stlbsa.org/activities/camping/summer-camp/scouts-bsa-summer-camp/>



SCOUTS BSA SUMMER CAMP

6 CAMPS TO CHOOSE FROM!

CAMP JOY

Challenge Courses
Canoeing, Rowing, Standup
Paddleboards
Sailing
Shooting Sports
Choose Your Own Adventure Day
STEM Programs

CAMP FAMOUS EAGLE @ S-F Scout Ranch

270-acre Nim's Lake
Water sports
16,000 sq. ft dining hall
STEM merit badges, Nova awards
Huck's Cove Water Park
Voyageur first-year camper program
Provisional Camping

SWIFT HIGH ADVENTURE BASE @ S-F Scout Ranch

(VENTURERS & OLDER SCOUTS)

Challenge courses & climbing
Horseback riding
Sailing
Dancing
Off-camp excursions
Mountain boarding
Tubing & skiing

LEARN MORE & REGISTER:

<https://stlbsa.org/activities/camping/summer-camp/scouts-bsa-summer-camp/>



SCOUTS BSA SUMMER CAMP



Specialty Camps

What is a Specialty Camp? Specialty camps offer programs focused on a particular interest. All specialty camps provide adult supervision, so Scouts can attend individually, if needed.

S-F Ranger Program



Explore the back country of S-F
Blacksmith
Black powder rifle shooting
Cook trail meals
Explore old homesteads

Qualifies for 2nd Week Discount

Catholic Adventure Week



Enjoy a week of camp with an emphasis on your faith

Daily Mass

Visits by Clergy

All merit badges, novas, and other programs traditionally offered at camp

Qualifies for 2nd Week Discount

Horse Camp



Horsemanship

Trail rides

Swimming

Shooting Sports

Climbing

Challenge Courses

Visit stlbsa.org for dates and prices.

Eagle Trail



Eagle-required merit badges

Life-to-Eagle process

Cultural programs

STEM merit badges and Novas

Qualifies for 2nd Week Discount

STEM Week



40 STEM merit badges to from!

Visits by engineers, chemists, mathematicians, and more!

NOVA Awards

Evening STEM programs and exhibits

Qualifies for 2nd Week Discount



STLBSA.ORG

SCOUTS BSA SUMMER CAMP

CAN'T ATTEND CAMP WITH YOUR TROOP?

JOIN A PROVISIONAL TROOP!

Scouts who can't attend summer camp with their troop can sign up for our provisional troop at Famous Eagle or older scouts can join a crew at Swift Base! Leadership is provided and Scouts can sign up individually. Scouts will have access to all of the programs offered at these camps.

CAMPERSHIPS (FINANCIAL ASSISTANCE)

Every youth deserves the opportunity to attend summer camp, regardless of financial situation. The Greater St. Louis Area Council offers several ways for Scouts to earn their way to camp, including popcorn sales and camp cards. For those Scouts who need additional assistance, camperships are available. Apply at stlbsa.org.

DISCOUNTS

Second week discount: Attend a week of Scouts BSA or Venturing summer camp and get \$100 off a second week of camp (excludes National Youth Leadership Training, and Horse camp). Or, get \$50 off a GSLAC camp if you spend a week at another council's camp or high-adventure base.

Family discount: A \$100 discount is available for siblings who attend a GSLAC Scouts BSA camp.



CAMP STAFF , THE ULTIMATE CAMP EXPERIENCE

Each year, the Greater St. Louis Area Council hires dedicated and passionate individuals to serve on summer camp staff. Staff members provide a fun, positive experience for campers, all while earning a salary! They also have the opportunity to earn a college scholarship worth up to \$1,250.

Visit the Camp Staff page at stlbsa.org this Fall for the 2021 Camp Staff application and interview information.

TAKE CAMP STAFF FOR A TEST DRIVE AS A CIT!

The Counselor In Training (CIT) program allows Scouts who are 14 or 15 years old to participate for up to three weeks as a volunteer camp staff member. Participants work in several program areas, giving them the experience to decide if working as a full-time camp staff member is something they would enjoy. The program is at S bar F Scout Ranch, Camp Joy, Camp Warren Levis, Rhodes- France, and Camp May. Lodging and meals will be provided. CIT applicants will take part in the camp staff interviews in late 2020.

2021 NATIONAL JAMBOREE

**Summit Bechtel Reserve
Glen Jean, West Virginia**

July 21-30, 2021



40,000 Scouts, leaders, and staff

**One of the longest zip lines in
North America**

World-class skate park

All-terrain vehicles

Treetop canopy tours

Rock climbing

Patch trading

Stadium shows

And much more!

Held every four years, the Jamboree is an amazing opportunity for everyone to experience the best of Scouting, all in one place.

Troops and Crews are currently forming all around the council.

Register today and reserve your spot for this unforgettable opportunity!



ADDITIONAL RESOURCES

- Greater St Louis Area Council, BSA: stlbsa.org
- National BSA: Scouting.org
- Religious awards information: <https://stlbsa.org/activities/other-activities/faith-based-events/>
- Scout supplies: <https://www.scoutshop.org/>
- Scoutbook: <https://www.scoutbook.com/mobile/>
- Succession planning: <https://www.hoac-bsa.org/Data/Sites/1/media/commissioner-service/Pack-Succession-Planning-Worksheet.pdf>
- Training and unit resource: <https://my.scouting.org/>

